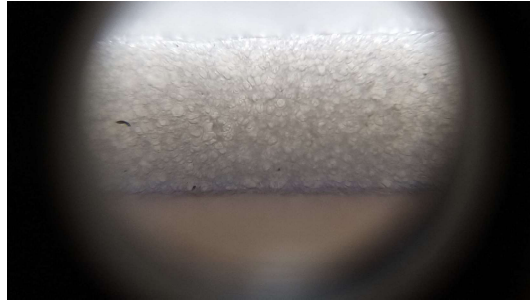


**COMPARATIVE TEST
OF CHINESE PVC
RESIN
PERFORMANCE**

Formulation (PHR):
PVC 100 + DOTP 60 + Ba-Zn 1 + Azo paste 4 + K-Zn 3
Coating Thickness hasn't been controlled accurately.
Foaming conditions: 2min - 200°C
Release paper: Sancho (FVN)

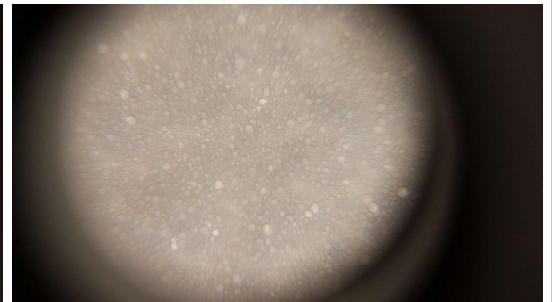
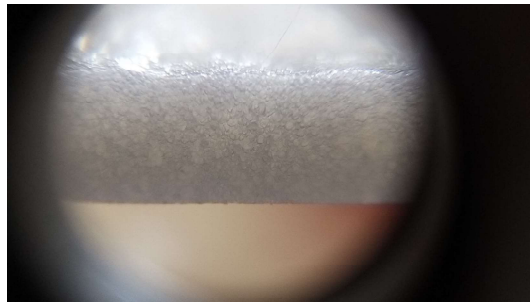
1- EUROPEAN RESIN

Weight (g/m²): 560
Thickness (mm): 2,30
Density (kg/m³): 24.35
Viscosity: Middle



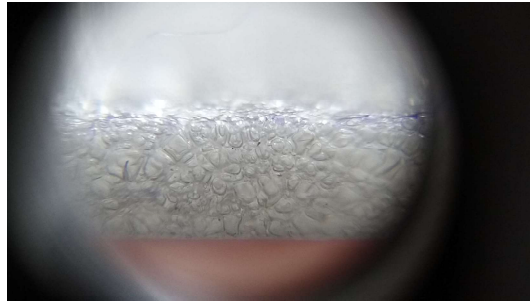
2- EUROPEAN RESIN

Weight (g/m²): 519
Thickness (mm): 2,40
Density (kg/m³): 21.63
Viscosity: Middle/high



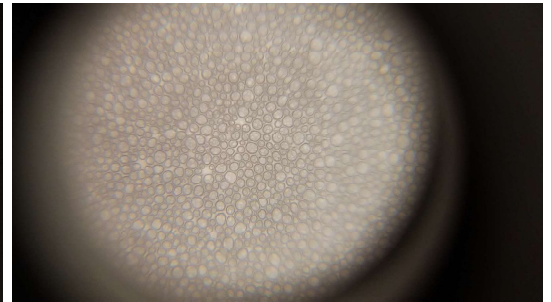
3- P-440

Weight (g/m²): 423
Thickness (mm): 1,90
Density (kg/m³): 22.26
Viscosity: Middle/Low



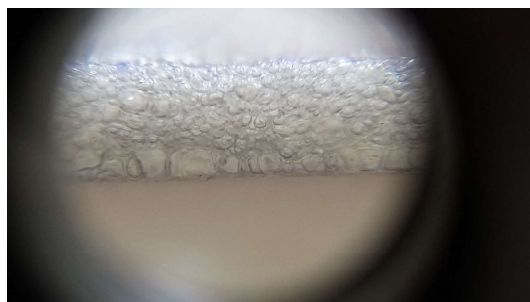
4- P-450

Weight (g/m²): 446
Thickness (mm): 2,20
Density (kg/m³): 20.27
Viscosity: Low



5- PB-1302

Weight (g/m²): 432
Thickness (mm): 1.80
Density (kg/m³): 24.00
Viscosity: Low



**COMPARATIVE TEST
OF CHINESE PVC
RESIN
PERFORMANCE**

Formulation (PHR):
PVC 100 + DOTP 60 + Ba-Zn 1 + Azo paste 4 + K-Zn 3

Coating Thickness hasn't been controlled accurately.
Foaming conditions: 2min - 200°C
Release paper: Sancho (FVN)

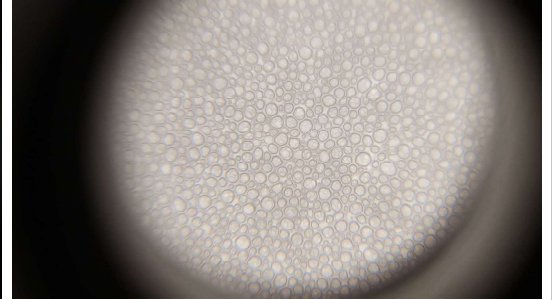
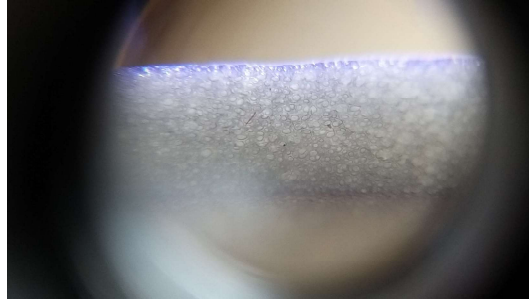
6- PB-1156

Weight (g/m²): 502

Thickness (mm): 2,02

Density (kg/m³): 22.82

Viscosity: Very high



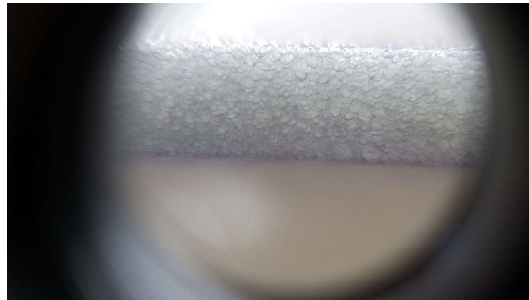
7- PSM-31

Weight (g/m²): 455

Thickness (mm): 2,00

Density (kg/m³): 22.75

Viscosity: Very low



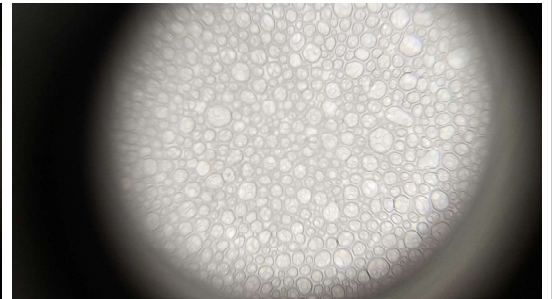
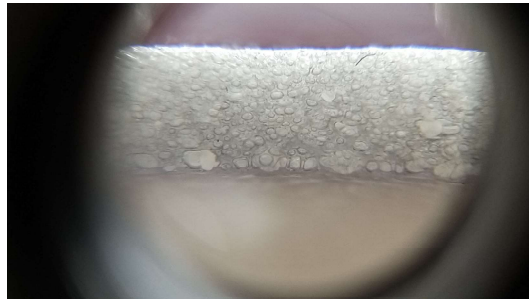
8- PSL-31

Weight (g/m²): 445

Thickness (mm): 2,10

Density (kg/m³): 21.19

Viscosity: Middle/Low



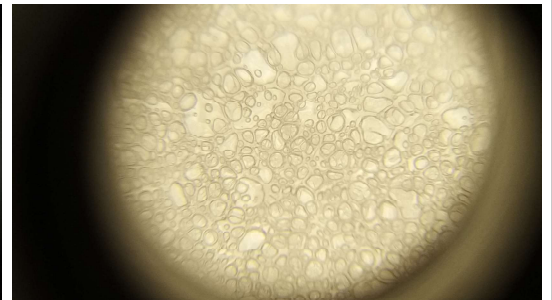
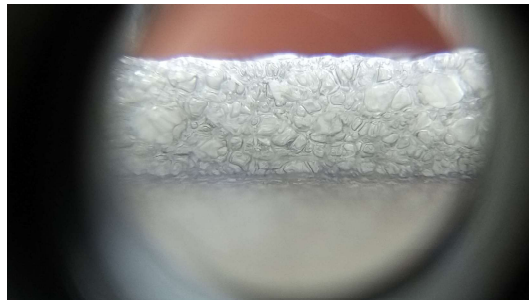
9- BPR-440

Weight (g/m²): 476

Thickness (mm): 2,20

Density (kg/m³): 21.64

Viscosity: Middle/Low



10- BPR-450

Weight (g/m²): 503

Thickness (mm): 2,50

Density (kg/m³): 20.12

Viscosity: Middle/high

